

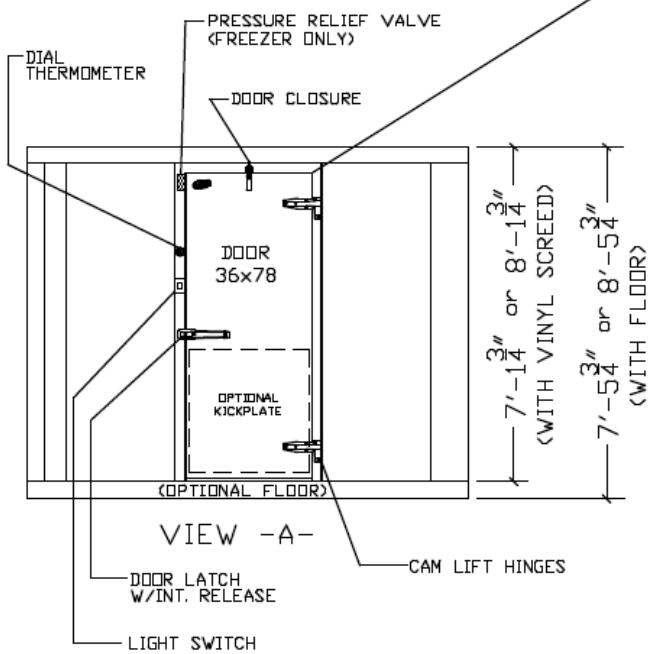
FLOOR OPTIONS:



COOLER or FREEZER

115/60/1, 1.0 AMPS FOR LIGHT ONLY  
 115/60/1, 2.2 AMPS FOR LIGHT & HEAT WIRE  
 ADDITIONAL AMP DRAWS FOR REFRIGERATION

DOOR SHOWN HINGED RIGHT. CUSTOMER TO CONFIRM R.H. OR L.H. HINGE... EXCEPT FOR INTERIOR RAMP APPLICATIONS, THE DOOR LOCATION CAN BE MOVED TO ANY PANELS MARKED #1047.



LISTED




LISTED

ASTM E-84 APPROVED

WARNING

ENGINEERED FOR ON-GRADE INSTALLATION. IF ANY PORTION OF THIS WALK-IN IS TO BE INSTALLED IN A DEPRESSION, \*CONTACT LEER WALK-IN SALES DEPARTMENT IMMEDIATELY 1-800-766-5337.

DATE	4-16-04	 LEER WALK-IN DIVISION NEW LISBON, WI. PH. # 1-800-766-5337 FAX # 1-808-562-3166	DRAWING #  STK128
SCALE	N.T.S.		
DWN BY	DWS		
CHK'D BY	DWS		
11'-7" X 7'-9" (G-24) COOLER or FREEZER			