



Serviceable Bulk Head Fittings available in 2" and 3".



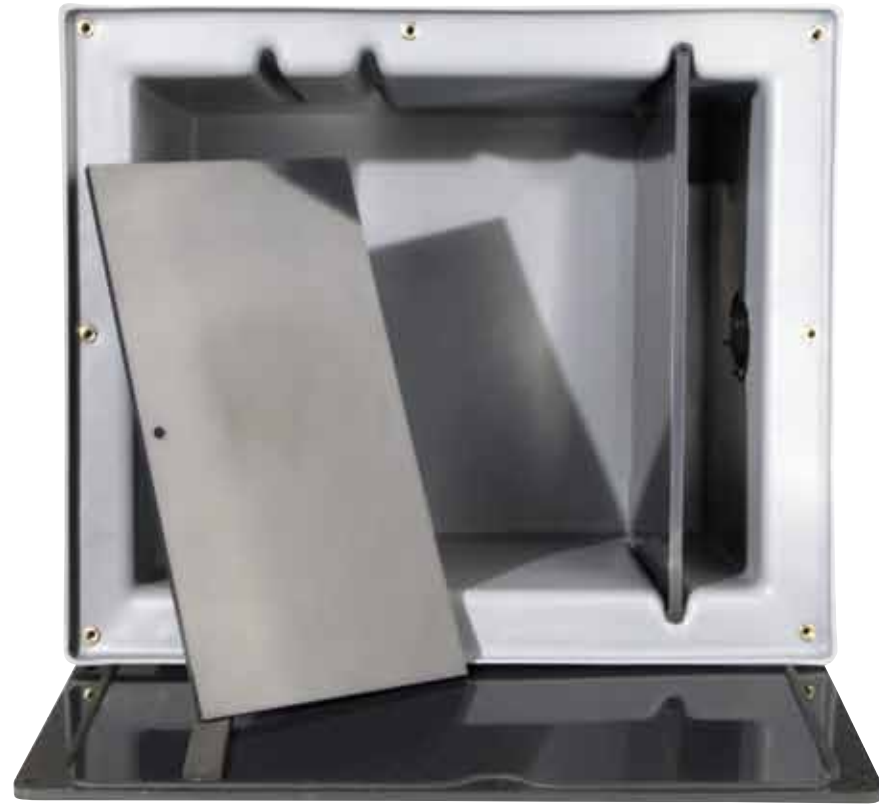
"D" Ring gaskets on covers.



All Units include flow control, shipped inside.



PDI Certified



Shown in grey to illustrate baffle design.

PolyTrap® unique features include:

- Scientifically placed, removable baffles.
- Flow control device as required.
- Complete inlet and outlet connections with standard female threads.
- D-ring sealing gasket between cover and tank.
- Matching cover with flush mounted bolts in stainless steel.
- Easy-to-read installation instructions.
- Strong and durable, yet light in weight to make handling and installation less demanding.
- Products can ship via UPS same business day.

Listed by many local and state authorities



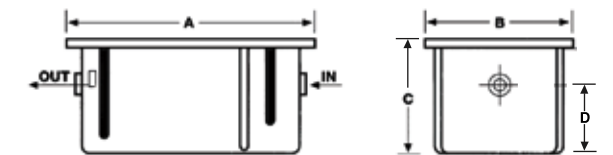
- **Certified** to the exacting standards of PDI.
- **Listed** by other local code authorities.
- **PolyTrap®** is **Superior** to metal, fiberglass, or specially treated materials that are promoted as "preventing corrosion". PolyTrap® grease interceptors include a completely integrated surf guaranteed not to corrode, chip, peel or leach.
- **Leak-proof**, seamless constructed tank, manufactured with high-quality material that provides enhanced stiffness in combination with impact resistant properties.
- **Lightweight**, easy to handle and install – yet durable and sturdy to withstand the most rigorous applications of the plumbing industry.
- The unique resin used allows for use in applications requiring high temperature continuous service. No comparable material like it.
- Smooth, non-stick surface allows for easier and more complete cleaning, **Stay's Clean Looking.**
- Surfaces discourage bacteria build-up.
- High value for you – the customer.
- **Fast Delivery**, in stock.
- Can be used on floor or in ground flush to floor.
- Can be shipped anywhere for very low cost compared to metal competitors.

Options and Considerations for ordering

- All dimensions are nominal and may vary from table.
- 4800 Series models include flow control device.
- Matte finish on all covers to reduce slipping.
- Special HD Diamond Plate cover over-lays are available for pedestrian traffic areas.
- All units include removable baffle and internal air-relief.
- * Check on code approval status & availability.



DATA ON DIMENSIONS & SPECIFICATIONS



Model Number	4804	4807	4810	4815	4820	4825	4835	4850	75*
Flow Rate G.P.M.	4	7	10	15	20	25	35	50	75
Grease Capacity (lbs.)	8	14	20	30	40	50	70	100	150
Approximate Dimensions (inches)	Length (A)	16.25	20	23	23	29	32.5	32.5	44.25
	Width (B)	10	14.5	14.5	19.5	19.5	19.5	22	25
	Height (C)	10.25	11.75	13.375	14	14.75	18	19	25
Bottom of unit to center of inlet/ outlet (D)	7	7.50	8.50	9.25	10.50	13	13.5	13.5	19.25
Nom. Wall Thickness (in.)	3/16	3/16	3/16	3/16	3/16	3/16	3/16	3/16	3/16
Approximate Weight (lbs.)	10	15	18	25	30	35	40	50	72
Standard Inlet/Outlet (in.)	2	2	2	2	2	3	3	3	3
Liquid Holding Capacity (gal)	2.3	5.6	7.3	12.1	17.6	24.8	30.0	40.5	61.8

*Certification Pending

Call about larger high capacity units.
Also available: Interceptors for solids, lint, hair.