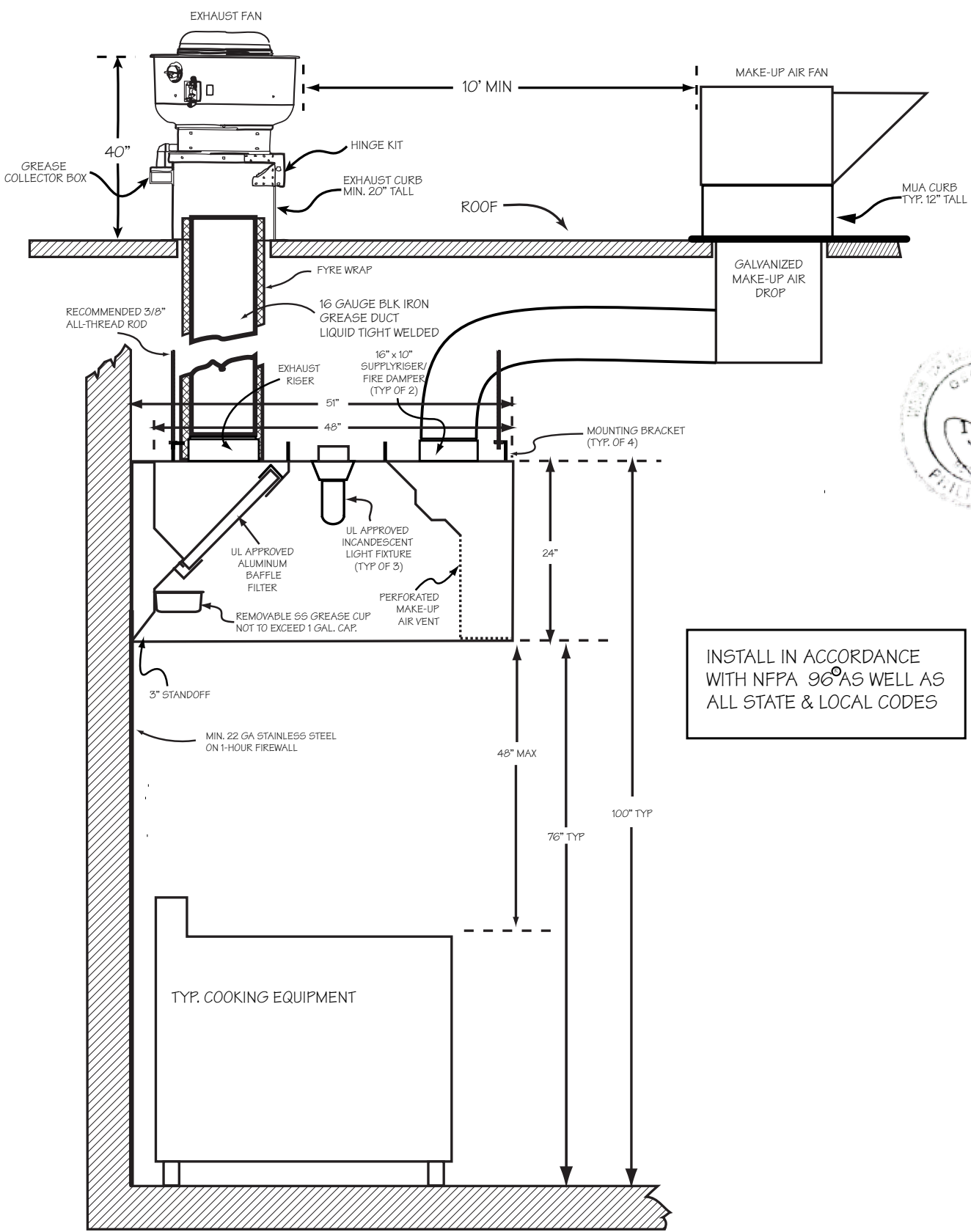


BSSM 48-14 ETL

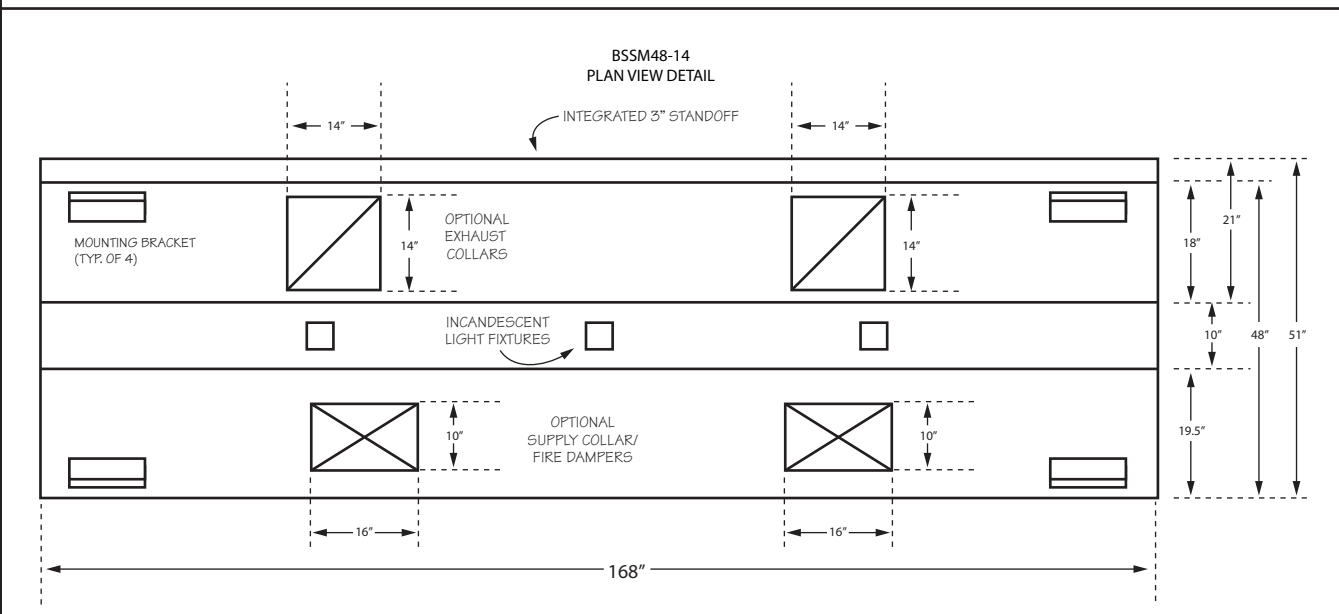
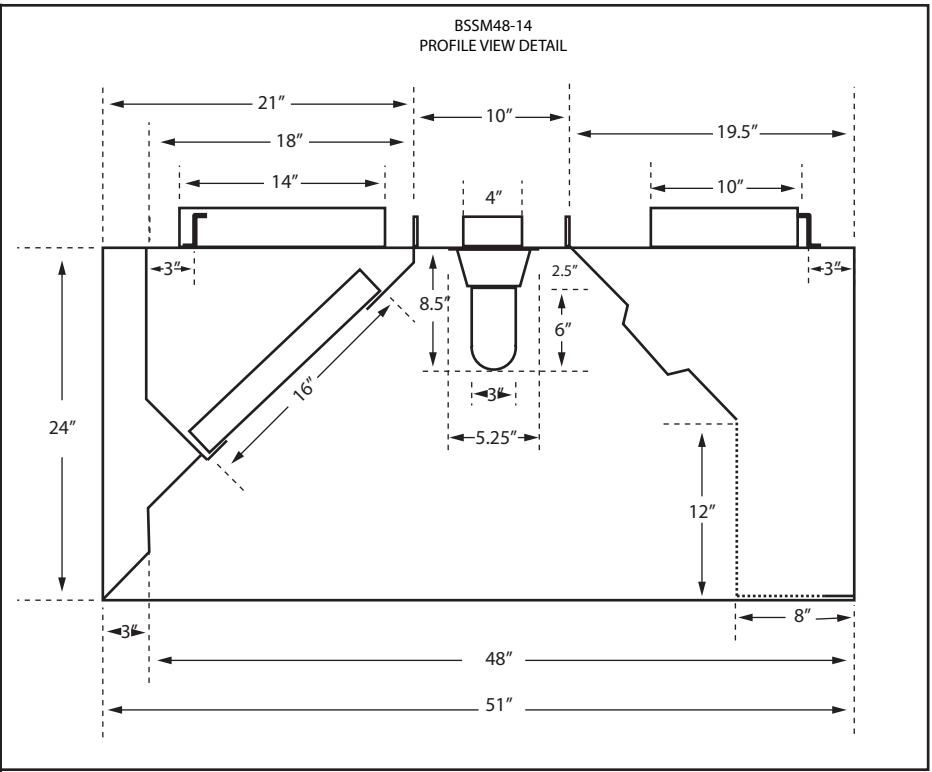
STAINLESS STEEL EXHAUST HOOD WITH MAKEUP AIR VENT
 ETL APPROVED. N.S.F. LISTED. CONFORMS TO NFPA 96
 ETL LISTED # 3148390 CONFORMS TO UL STD 710



PROFILE VIEW - TYPICAL HOOD SYSTEM INSTALLATION



INSTALL IN ACCORDANCE WITH NFPA 96 AS WELL AS ALL STATE & LOCAL CODES



HOOD INFORMATION (PER HOOD)										
STYLE	LENGTH	WIDTH	HEIGHT	HOOD CONSTRUCTION	FILTERS				LIGHTS	
					TYPE	QTY	HEIGHT	LENGTH	QTY	TYPE
BSSM48-14-ETL	14'	48"	24"	TYPE: 430 STAINLESS STEEL GAUGE: 18 POLISH: #3	ALUMINUM BAFFLE w/HANDLES UL APPROVED	1	16"	20"	3	INCANDESCENT LIGHT FIXTURE UL APPROVED
						6	16"	25"		
CFM REQUIREMENTS (PER HOOD)			OPTIONAL COLLARS (PER HOOD)							
EXHAUST	SUPPLY		EXHAUST	SUPPLY		STANDOFF	NOM WEIGHT		ACCESSORIES	
3,920 @ .75 S.P.	3,136 @ .12 S.P.		QTY	SIZE	QTY	SIZE	<input type="checkbox"/> NONE <input checked="" type="checkbox"/> 3" <input type="checkbox"/>	700 LBS		
		2	14" X 14"	2	16" X 10"					

SUPERIOR HOODS
 2018 STEEL DRIVE TUCKER GA 30084
 TEL (770) 936 0770 FAX (770) 936 9914