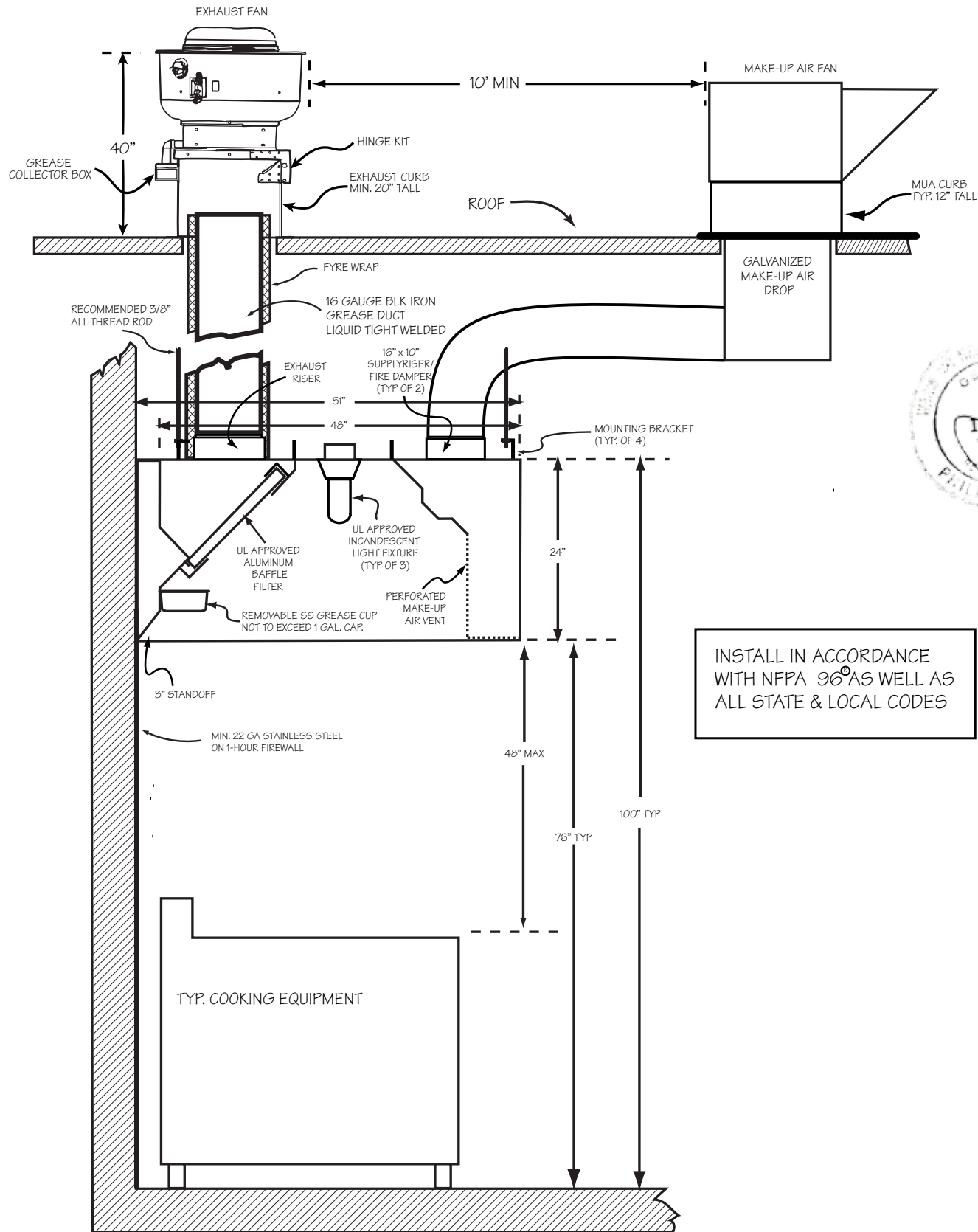


BSSM 48-9 ETL

STAINLESS STEEL EXHAUST HOOD WITH MAKEUP AIR VENT
 ETL APPROVED. N.S.F. LISTED. CONFORMS TO NFPA 96
 ETL LISTED # 3148390 CONFORMS TO UL STD 710



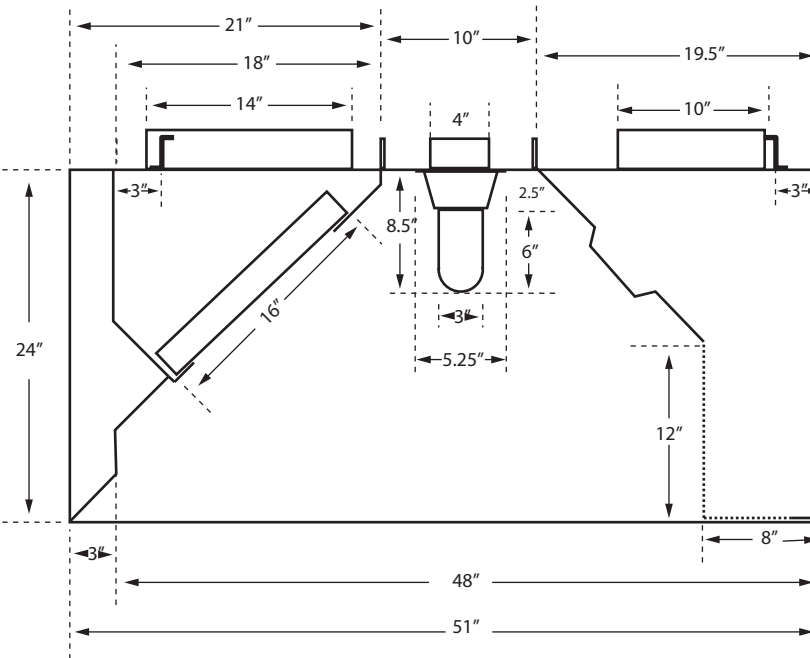
PROFILE VIEW - TYPICAL HOOD SYSTEM INSTALLATION



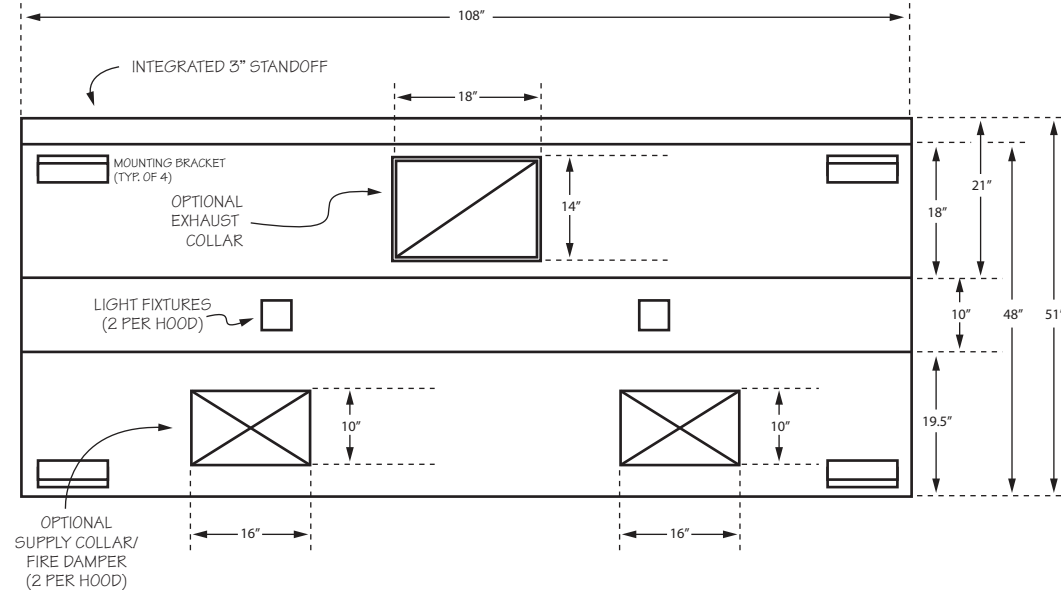
INSTALL IN ACCORDANCE WITH NFPA 96 AS WELL AS ALL STATE & LOCAL CODES



BSSM48-9
 PROFILE VIEW DETAIL



BSSM48-9
 PLAN VIEW DETAIL



HOOD INFORMATION (PER HOOD)

STYLE	LENGTH	WIDTH	HEIGHT	HOOD CONSTRUCTION	FILTERS			LIGHTS		
					TYPE	QTY	HEIGHT	LENGTH	QTY	TYPE
BSSM48-9-ETL	9'	48"	24"	TYPE: 430 STAINLESS STEEL GAUGE: 18 POLISH: #3	ALUMINUM BAFFLE w/HANDLES UL APPROVED	4	16"	20"	2	INCANDESCENT LIGHT FIXTURE UL APPROVED
						1	16"	25"		
CFM REQUIREMENTS (PER HOOD)		OPTIONAL COLLARS (PER HOOD)								
EXHAUST	SUPPLY	EXHAUST	SUPPLY	STANDOFF	NOM WEIGHT	ACCESSORIES				
2,520 @ .75 S.P.	2,016 @ .12 S.P.	QTY	SIZE	QTY	SIZE	<input type="checkbox"/> NONE <input checked="" type="checkbox"/> 3"	450 LBS			
		1	14" X 18"	2	16" X 10"					

SUPERIOR HOODS

2018 STEEL DRIVE TUCKER GA 30084
 TEL (770) 936 0770 FAX (770) 936 9914