



Project _____
Item _____
Quantity _____
CSI - 11400 _____
Approval _____
Date _____



CADET Undercounter Dishwasher

- Three dedicated wash cycles (Dishware, Cookware, Glassware)
- Meets and exceeds EnergyStar 2.0 rating
- Extremely quiet with sound suppression lined panels. Rated at <65dB
- Built-in atmospheric booster with dedicated rinse pump provide consistent, constant 180°F hot water to properly sanitize ware—no external booster required
- 110°F recommended inlet water temperature; 70°F minimum required water temperature
- Perfect for Daycares, Nursing Homes, and Small Cafes

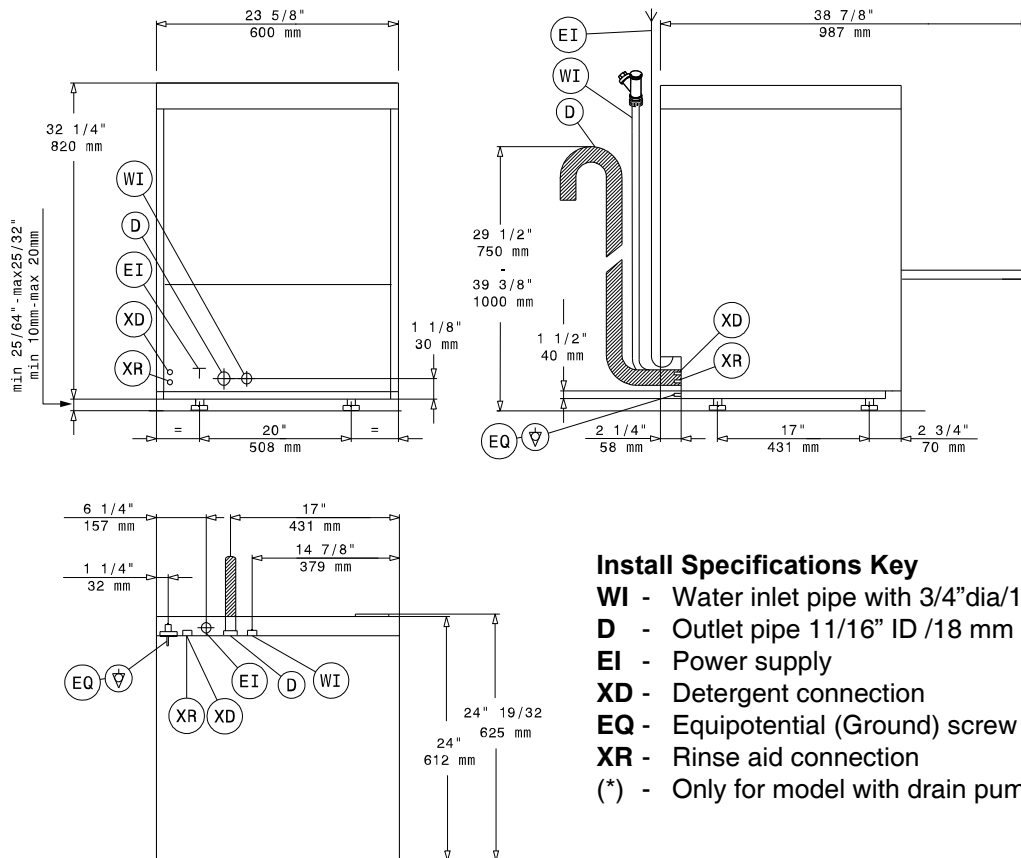
STANDARD FEATURES

- Capacity is 30 (20" x 20) racks per hour or 750 dishes per hour
- Only 0.8 gal (3L) of water per rack
- Full stainless steel construction inside and out for durability
- Tank has rounded corners for easy cleaning
- Electronic PCB control with temperature display, LED indicator lamps, and self-diagnostics for serviceability
- Single phase (1PH) electrical connection, field-convertible to three phase (3PH) with included copper jumper connectors
- Waterproof membrane control switches
- No need for PRV (Pressure Regulating Valve).
- Built-in detergent and rinse aid dispensers with EZ Prime system
- Automatic pumped drain with removable overflow tube
- Single step drain and clean system
- Dedicated timed de-lime cycle to eliminate limescale build-up
- Revolving interchangeable stainless steel upper and lower wash/rinse arms provide superior results
- Door opening is 13 3/16" for maximum clearance
- Easy to service—all components accessible from the front of machine
- Sound suppression lined panels
- Comes standard with: 1 Plate rack, 1 Cup rack, 1 Glass Rack, 2 Cutlery Cups

OPTIONS

- Additional plastic 20" x 20" rack
- Drain quench system
- 6" stand
- 17" stand
- Drip 'n Dry drying rack





Install Specifications Key

- WI** - Water inlet pipe with 3/4" dia/19mm fittings
- D** - Outlet pipe 1 1/16" ID /18 mm (*).
- EI** - Power supply
- XD** - Detergent connection
- EQ** - Equipotential (Ground) screw
- XR** - Rinse aid connection
- (*) - Only for model with drain pump

Capacity Per Hour	30 racks 750 dishes 68 meals
Tank Capacity	6.08 gallons
Booster Capacity	3 gallon built-in booster
Motor Size	1hp (wash)
Electric Usage	2.2 kW wash tank 6.0 kW built-in booster (40°-70° rise) 6.85 kW maximum operating
Water Inlet Temperature	110°F recommended inlet water temperature; 70 °F minimum required water temperature
Final Rinse Consumption at 20 psi min.	25.5 gallons/hour 0.80 gallons/rack
Exhaust Hood Requirement	None
Time Cycle	120 sec. (Standard) 240 sec. (Extended) 130 sec. (Gentle)
Shipping Weight	165 lbs.
Current Draw Amps	Electric with Built-in Booster
208/1/60	33
208/3/60	20
Recommended Plug and Receptacle	1-Phase: L15-50P (Plug) L15-50R (Receptable) 3-Phase: L15-30P (Plug) L15-30R (Receptable)

SPECIFICATIONS

CONSTRUCTION- Door, front, side, and top panels are of stainless steel AISI304 ("T304") construction of various material thicknesses including sound-suppression lined panels. Upper and lower wash/rinse arms are T304 stainless steel and are interchangeable and revolving. Tank is stainless steel with stamped rounded corners for easy cleaning.

CONTROLS- Electronic PCB waterproof membrane controls with temperature display, LED indicator lamps, and self-diagnostics for serviceability. Three (3) dedicated cycle buttons (regular, extended, gentle) also function to prime detergent and rinse aid.

WASH/RINSE SYSTEM- Three (3) dedicated wash cycles- Regular (dishware), Extended (cookware), Gentle (glassware). 110°F recommended inlet water temperature; 70°F minimum required water temperature. Built-in atmospheric booster with dedicated rinse pump for 180° final rinse.

DRAIN SYSTEM- Drain pump moves water up to 29 1/2" above floor level. Connection to be open drain with atmospheric air gap. Dishwasher drain system cannot be tied into garbage disposal.

INTERNAL HEIGHT- 13 3/16"

Contact Insinger Sales at 800-344-4802 for an installation drawing specific to your application. This drawing is available on the Insinger website at www.insingermachine.com

Note: Due to product improvement we reserve the right to change information and specifications without notice.