

INTERCEPTORS

800 Series

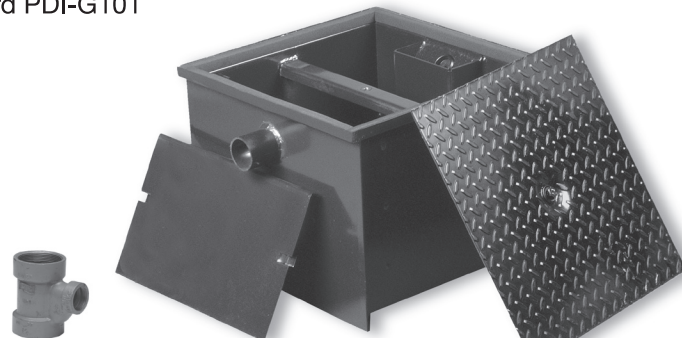
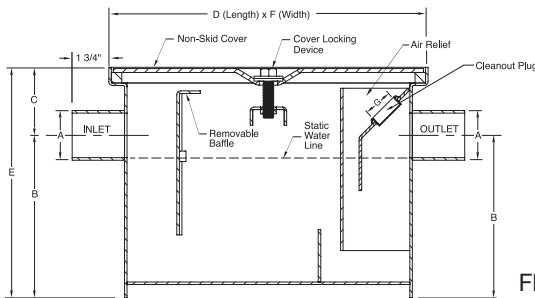
TAG _____

Grease Interceptors, Series 800 - 801

Product Description: Recommended for removing, then retaining fat, oil, and grease from wastewater in kitchen and restaurant areas where food is prepared. The 800 series grease interceptor is constructed of coated corrosion-resistant fabricated steel with no-hub connections and separate no-hub flow control; a one-piece removable baffle; diamond plate, non-skid cover; and a unique, combination cover locking/lifting device.

Features and Benefits:

- Slip-resistant diamond plate cover
- Designed to be installed in above-the-floor installations or recessed where space is limited
- One piece removable baffle assembly
- Combination cover locking/lifting device
- Constructed of fabricated steel, corrosion-resistant coated
- Regularly furnished with no-hub inlet and outlet, threaded available
- Low type grease interceptor is designed to be installed under the sink or in an area where space is limited
- Conforms to PDI Grease Interceptor Standard PDI-G101
- IAPMO Listed, File No. 2697 and C-3878



Flow Control for Series 800-801

Series 800-801

FIG. NO.	GPM FLOW RATE	GREASE CAP LBS	A	B	C	D (LENGTH)	E (HEIGHT)	F (WIDTH)	G (Plug Size)
800-Y02-04	4	8	02"	6 7/8"	2 3/4"	14"	9 5/8"	14"	1 1/2"
800-Y02-07	7	14	02"	7 3/4"	3 1/4"	15 1/4"	11"	15 1/4"	1 1/2"
800-Y02-10	10	20	02"	8 3/4"	3 5/8"	16 3/4"	12 3/8"	16 3/4"	1 1/2"
800-Y02-15	15	30	02"	11 1/4"	3 1/2"	19"	14 3/4"	19"	1 1/2"
800-Y03-20	20	40	03"	12 3/4"	4"	21"	16 3/4"	21"	1 1/2"
800-Y03-25	25	50	03"	14 1/4"	4 1/8"	22 3/4"	18 3/8"	22 3/4"	1 1/2"
800-Y03-35	35	70	03"	14 1/2"	4 1/2"	24"	19"	24"	1 1/2"
800-Y03-50	50	100	03"	14 1/2"	5 1/4"	33 1/4"	19 3/4"	24"	1 1/2"
LOW TYPE									
801-Y03-20	20	40	03"	7"	3 1/2"	41"	10 1/2"	21 3/4"	1 1/2"
801-Y03-35	35	70	03"	7"	4 3/4"	53 3/4"	11 3/4"	27 1/2"	1 1/2"
801-Y03-50	50	100	03"	10"	5 15/16"	51 3/4"	15 15/16"	27 1/2"	1 1/2"
LOW TYPE									
800-T02-04	4	8	02"	6 7/8"	2 3/4"	14"	9 5/8"	14"	1 1/2"
800-T02-07	7	14	02"	7 3/4"	3 1/4"	15 1/4"	11"	15 1/4"	1 1/2"
800-T02-10	10	20	02"	8 3/4"	3 5/8"	16 3/4"	12 3/8"	16 3/4"	1 1/2"
800-T02-15	15	30	02"	11 1/4"	3 1/2"	19"	14 3/4"	19"	1 1/2"
800-T03-20	20	40	03"	12 3/4"	4"	21"	16 3/4"	21"	1 1/2"
800-T03-25	25	50	03"	14 1/4"	4 1/8"	22 3/4"	18 3/8"	22 3/4"	1 1/2"
800-T03-35	35	70	03"	14 1/2"	4 1/2"	24"	19"	24"	1 1/2"
800-T03-50	50	100	03"	14 1/2"	5 1/4"	33 1/4"	19 3/4"	24"	1 1/2"
LOW TYPE									
801-T03-20	20	40	03"	7"	3 1/2"	41"	10 1/2"	21 3/4"	1 1/2"
801-T03-35	35	70	03"	7"	4 3/4"	53 3/4"	11 3/4"	27 1/2"	1 1/2"
801-T03-50	50	100	03"	10"	5 15/16"	51 3/4"	15 15/16"	27 1/2"	1 1/2"

NOTE: Dimensional data is subject to manufacturing tolerances and change without notice.



A Product of:
JAY R. SMITH MFG. CO.
DIVISION OF SMITH INDUSTRIES, INC.



Series 800-801

SPM 1013
10/08