

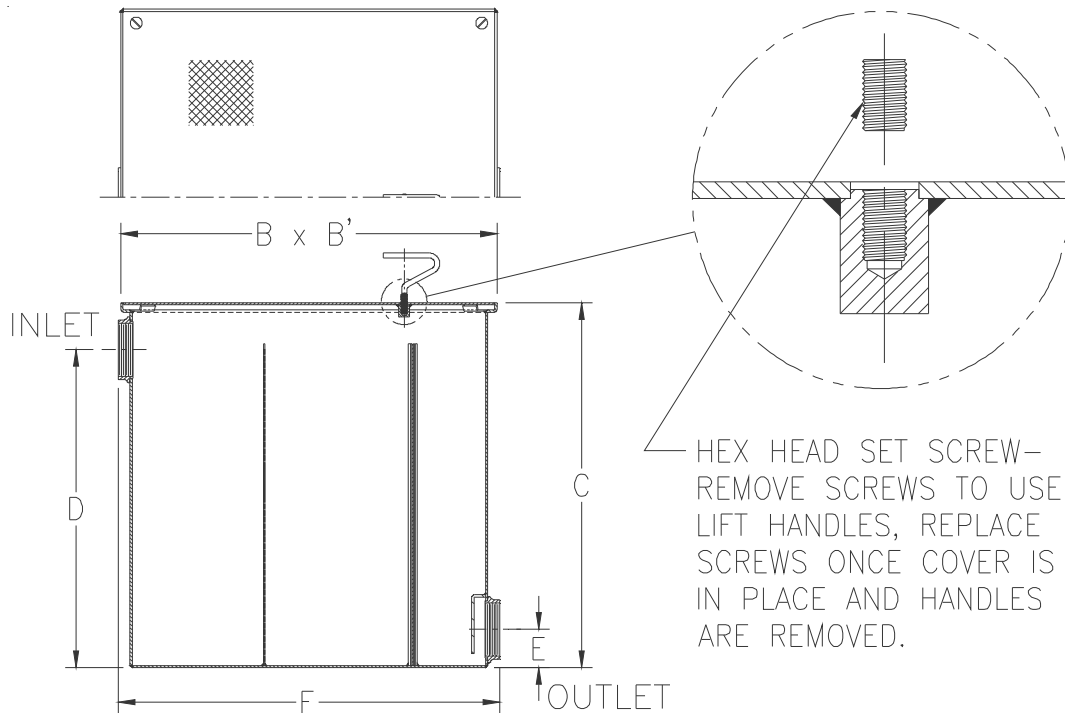


Z1185 LINT INTERCEPTOR

SPECIFICATION SHEET

TAG _____

Dimensional Data (inches and [mm]) are Subject to Manufacturing Tolerances and Change Without Notice



| Size No. of Machines | Inlet/Outlet Size | Flow Rate G.P.M. [L] | Approx. Wt. Lbs. [kg] | Dimensions In Inches | | | | | |
|----------------------|-------------------|----------------------|-----------------------|----------------------|-----------|--------------|--------------|------------|--------------|
| | | | | B | B' | C | D | E | F |
| 3 | 2 [51] | 30 [113] | 93 [42] | 17 [432] | 17 [432] | 16-1/2 [419] | 13-1/2 [343] | 3-1/4 [82] | 17-1/4 [438] |
| 7 | 3 [76] | 70 [265] | 155 [70] | 25 [635] | 25 [635] | 20 [508] | 17 [432] | 3-1/4 [82] | 25-1/2 [648] |
| 10 | 4 [102] | 100 [378] | 271 [123] | 33 [838] | 33 [838] | 28 [711] | 25 [635] | 4 [102] | 34 [864] |
| 20 | 4 [102] | 200 [756] | 404 [183] | 40 [1016] | 40 [1016] | 35 [889] | 32 [813] | 4 [102] | 41 [1041] |
| 30 | 6 [152] | 300 [1134] | 654 [297] | 45 [1143] | 45 [1143] | 40 [1016] | 36 [914] | 5 [127] | 46 [1168] |
| 40 | 6 [152] | 400 [1512] | 723 [328] | 48 [1219] | 48 [1219] | 43 [1092] | 39 [991] | 5 [127] | 49 [1245] |
| 50 | 6 [152] | 500 [1890] | 911 [414] | 52 [1321] | 52 [1321] | 47 [1194] | 43 [1092] | 5 [127] | 53 [1346] |

ENGINEERING SPECIFICATION: ZURN Z1185

Acid Resistant Coated interior and exterior fabricated steel lint interceptor, non-skid secured cover with removable lift handle, aluminum lint intercepting secondary screen assembly, and permanent primary straining baffle with 3/8 [10] diameter perforated holes. Regularly furnished with high inlet and low outlet. Note: size #3 and #7 covers are not furnished with a lift handle.

OPTIONS (Check/specify appropriate options)

PREFIXES

- _____ Z Acid Resistant Coated Fabricated Steel*
- _____ ZS All Type 304 Fabricated Stainless Steel

SUFFIXES

- _____ -E Acid Resistant Coated interior and exterior fabricated steel extension section (Specify 'C' dimension required for recessed installation).
- _____ -RS Aluminum Screen Replacement Assembly

* Regularly furnished unless otherwise specified.