

Project: \_\_\_\_\_  
 Model #: \_\_\_\_\_  
 Item #: \_\_\_\_\_ Qty: \_\_\_\_\_  
 Approval: \_\_\_\_\_

460 Southport Commerce Blvd.  
 Spartanburg SC 29306  
 Phone: 864-574-6004  
 Toll Free: 1-888-532-2816  
 sales@ojedausainc.com  
 service@ojedausainc.com  
 www.ojedausa.com



## REFRIGERATED DELI CASE

## RDCH-3



**Custom Graphics  
 Available Upon Request**

### CARE FREE CONDENSER

The finless spiral condenser design prevents dust/dirt buildup allowing maximum long term efficiency.

### R-290 REFRIGERANT

Equipped with R-290 refrigerant, an eco-friendly alternative that meets the EPA's environmental impact regulations.

### STEEL CONSTRUCTION

Robust steel construction minimizes the use of plastic materials resulting in an environmentally friendly design.

### 120 VOLT SYSTEM

All Alfa models feature a 110/120 Volt system standard, ensuring hassle-free plug and play for our customers.

### ELECTRONIC CONTROL

The intelligent temperature control is programmed to ensure the correct operation of the equipment.

### LED LIGHTING

LED lighting in our deli cases is designed to elevate your display with long-lasting, energy-efficient illumination.

### HOT GAS EVAPORATION

Hot gas heated drain pan for condensate evaporation that reduces the need of floor drains or electric heaters.

### NON-REFRIGERATED OPTION

The new RDCH line offers the flexibility to convert into a dry case, allowing it to adapt perfectly to your specific needs.

### OPERATION TEMPERATURE

Medium Temp: 34°F to 40°F.

Dimensions			Levels	HP	Voltage	NEMA Config	Amps	Crated Weight	Refrigerant
W	D	H							
37.3"	33.7"	50.1"	2	1/6	120	5-15P	4	414 lbs	R-290
948 mm	856 mm	1273 mm	Net Capacity (cf): 10		Energy Consumption: 4.09 kWh/24 h				

\*Inches rounded up one decimal place. \*Specifics may change without notification.



FAMILY OWNED SINCE 1948  
 PROUDLY MANUFACTURED  
 IN NORTH AMERICA

# REFRIGERATED DELI CASE

# RDCH-3

## CABINET CONSTRUCTION

- High-density, CFC-Free, polyurethane insulation.
- Curved glass.
- Exterior: Galvanized metal cabinet with powder coated painted surface.
- Interior: Easy to clean pre-painted steel.
- Stainless steel bottom.
- Built-in power outlet for scale.
- Non-refrigerated variant with integrated switch.
- Rated for open food.

## DOOR

- Removable sliding glass doors.

## SHELVING

- Dimensions per level: 31.3" W x 15" D.
- 2 adjustable, black powder-coated wired shelves.

## OPERATING CONDITIONS

- The unit is best suited for an environment where temperatures remain below 75°F and humidity does not exceed 55%.
- Areas with direct sunlight should be avoided.

## ELECTRICAL

- 110/120 standard volt system.



## LIGHTING

- LED interior lighting.

## REFRIGERATION

- R-290 refrigerant.
- Maintenance free condenser.
- Hot gas heated condensation pan.
- Electronic temperature control.
- Reverse cycle defrost system.
- Easy to reach components for maintenance.

## ACCESSORIES

- Cutting board top.
- 3" or 5" casters (4 required).
- 6" stainless steel legs.
- Custom graphics.

## OPTIONAL ACCESSORIES

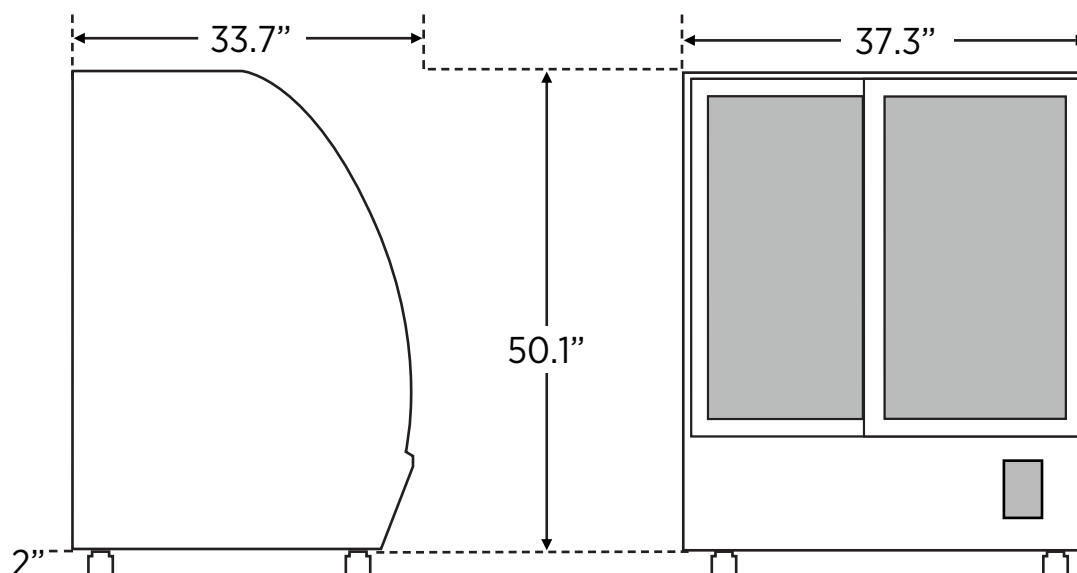
### 3"/5" CASTERS



### 6" STAINLESS STEEL LEGS



## DIMENSIONAL DRAWING



\*Inches rounded up one decimal place. \*Specifics may change without notification.



[www.ojedausa.com](http://www.ojedausa.com)