

Project: _____
 Model #: _____
 Item #: _____ Qty: _____
 Approval: _____

460 Southport Commerce Blvd.
 Spartanburg SC 29306
 Phone: 864-574-6004
 Toll Free: 1-888-532-2816
 sales@ojedausainc.com
 service@ojedausainc.com
 www.ojedausa.com



REFRIGERATED DELI CASE

RDCH-5



**Custom Graphics
 Available Upon Request**

CARE FREE CONDENSER

The finless spiral condenser design prevents dust/dirt buildup allowing maximum long term efficiency.

R-290 REFRIGERANT

Equipped with R-290 refrigerant, an eco-friendly alternative that meets the EPA's environmental impact regulations.

STEEL CONSTRUCTION

Robust steel construction minimizes the use of plastic materials resulting in an environmentally friendly design.

120 VOLT SYSTEM

All Alfa models feature a 110/120 Volt system standard, ensuring hassle-free plug and play for our customers.

ELECTRONIC CONTROL

The intelligent temperature control is programmed to ensure the correct operation of the equipment.

LED LIGHTING

LED lighting in our deli cases is designed to elevate your display with long-lasting, energy-efficient illumination.

HOT GAS EVAPORATION

Hot gas heated drain pan for condensate evaporation that reduces the need of floor drains or electric heaters.

NON-REFRIGERATED OPTION

The new RDCH line offers the flexibility to convert into a dry case, allowing it to adapt perfectly to your specific needs.

OPERATION TEMPERATURE

Medium Temp: 34°F to 40°F.

Dimensions			Levels	HP	Voltage	NEMA Config	Amps	Crated Weight	Refrigerant
W	D	H							
60.3"	33.7"	50.1"	2	1/4+	120	5-15P	5	591 lbs	R-290
1532 mm	856 mm	1273 mm	Net Capacity (cf): 17		Energy Consumption: 5.68 kWh/24 h				

*Inches rounded up one decimal place. *Specifics may change without notification.



FAMILY OWNED SINCE 1948
 PROUDLY MANUFACTURED
 IN NORTH AMERICA

REFRIGERATED DELI CASE

RDCH-5

CABINET CONSTRUCTION

- High-density, CFC-Free, polyurethane insulation.
- Curved glass.
- Exterior: Galvanized metal cabinet with powder coated painted surface.
- Interior: Easy to clean pre-painted steel.
- Stainless steel bottom.
- Built-in power outlet for scale.
- Non-refrigerated variant with integrated switch.
- Rated for open food.

DOOR

- Removable sliding glass doors.

SHELVING

- Dimensions per level: 54.3" W x 15" D.
- 6 adjustable, black powder-coated wired shelves.

OPERATING CONDITIONS

- The unit is best suited for an environment where temperatures remain below 75°F and humidity does not exceed 55%.
- Areas with direct sunlight should be avoided.

ELECTRICAL

- 110/120 standard volt system.



LIGHTING

- LED interior lighting.

REFRIGERATION

- R-290 refrigerant.
- Maintenance free condenser.
- Hot gas heated condensation pan.
- Electronic temperature control.
- Reverse cycle defrost system.
- Easy to reach components for maintenance.

ACCESSORIES

- Cutting board top.
- 3" or 5" casters (6 required).
- 6" stainless steel legs.
- Custom graphics.

OPTIONAL ACCESSORIES

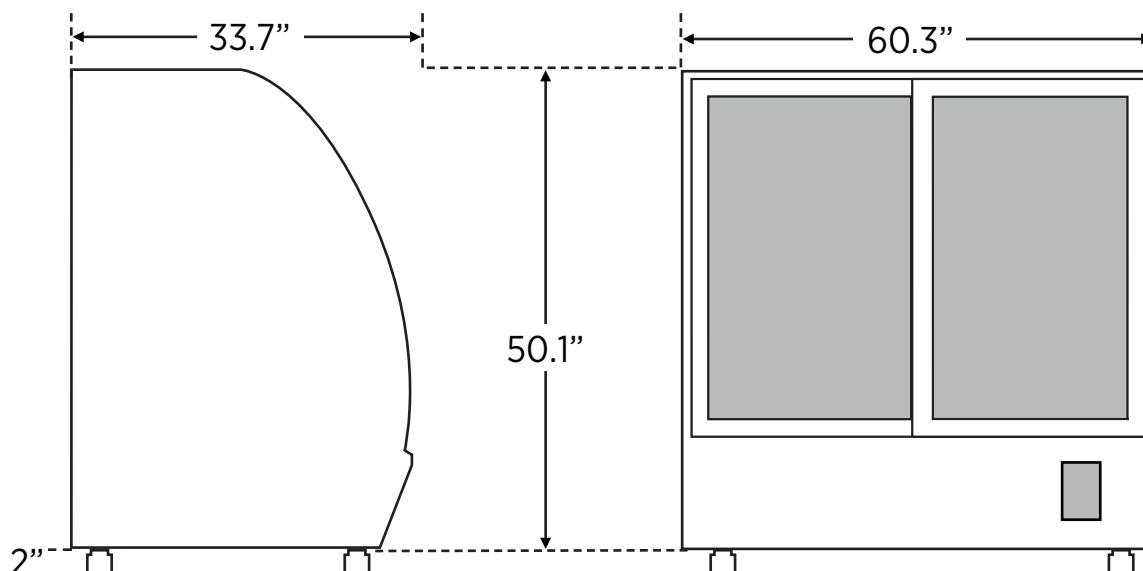
3"/5" CASTERS



6" STAINLESS STEEL LEGS



DIMENSIONAL DRAWING



*Inches rounded up one decimal place. *Specifics may change without notification.



www.ojedausa.com