

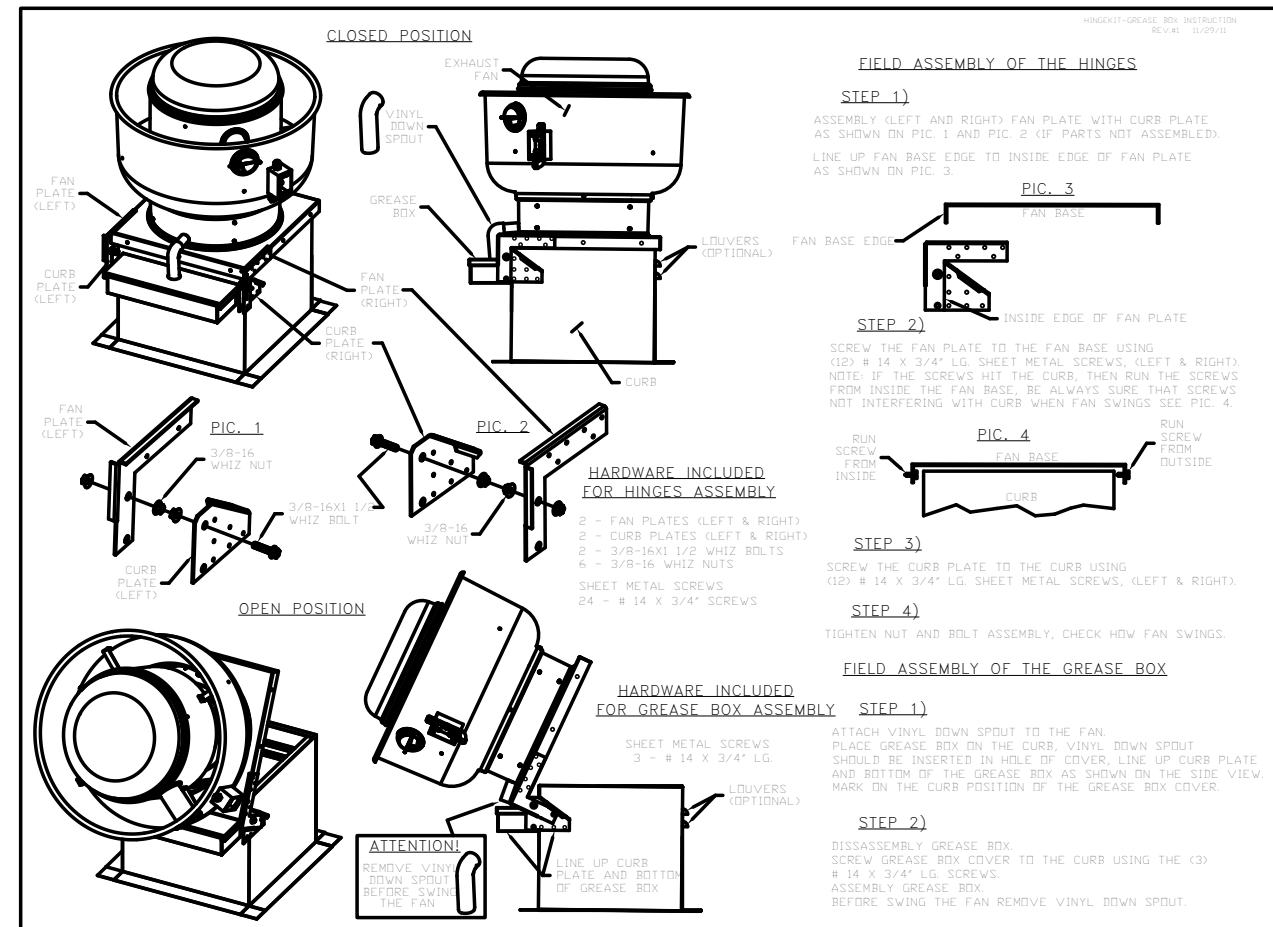
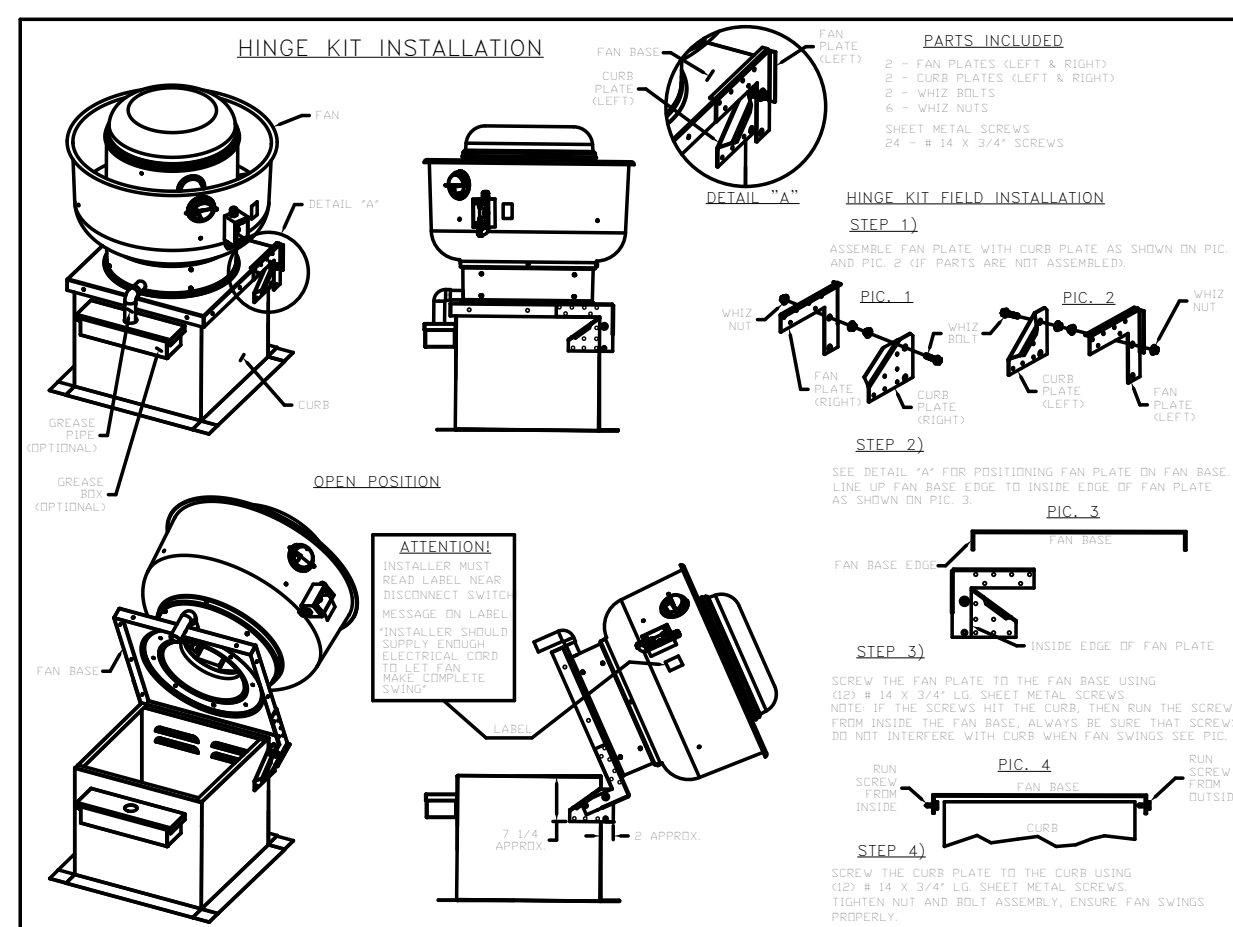
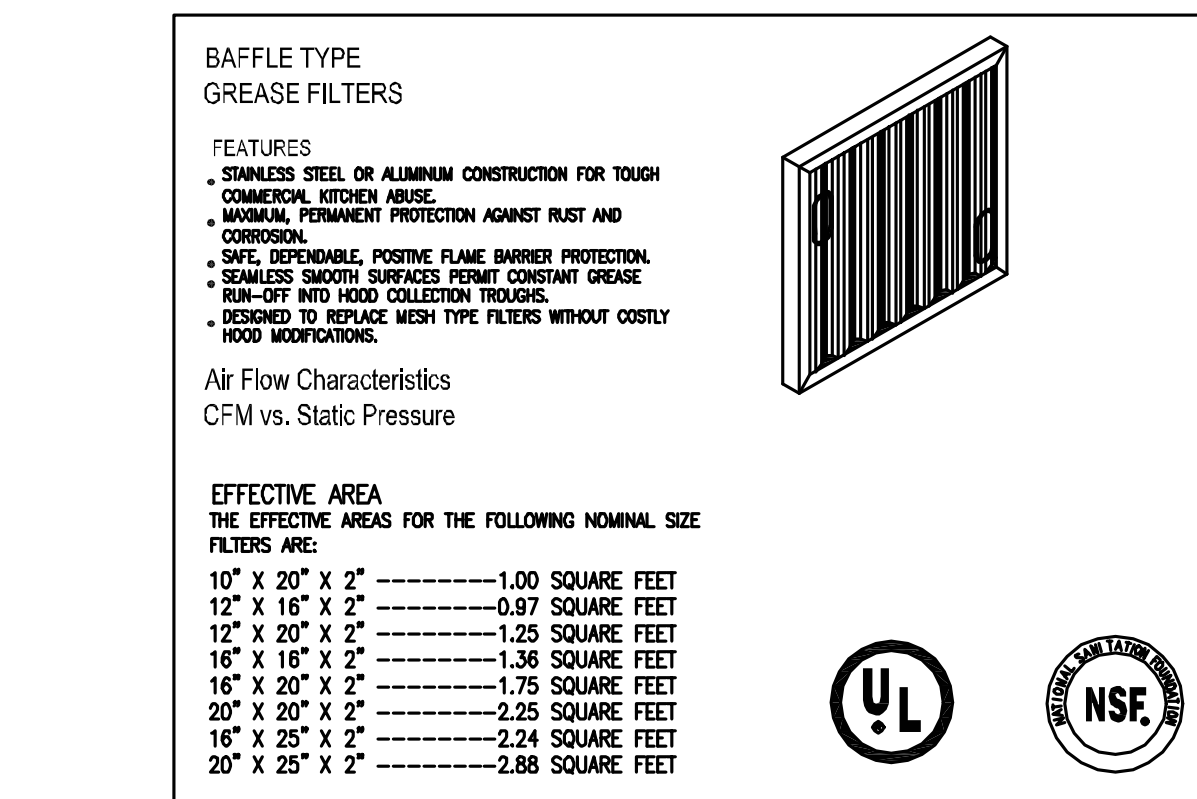
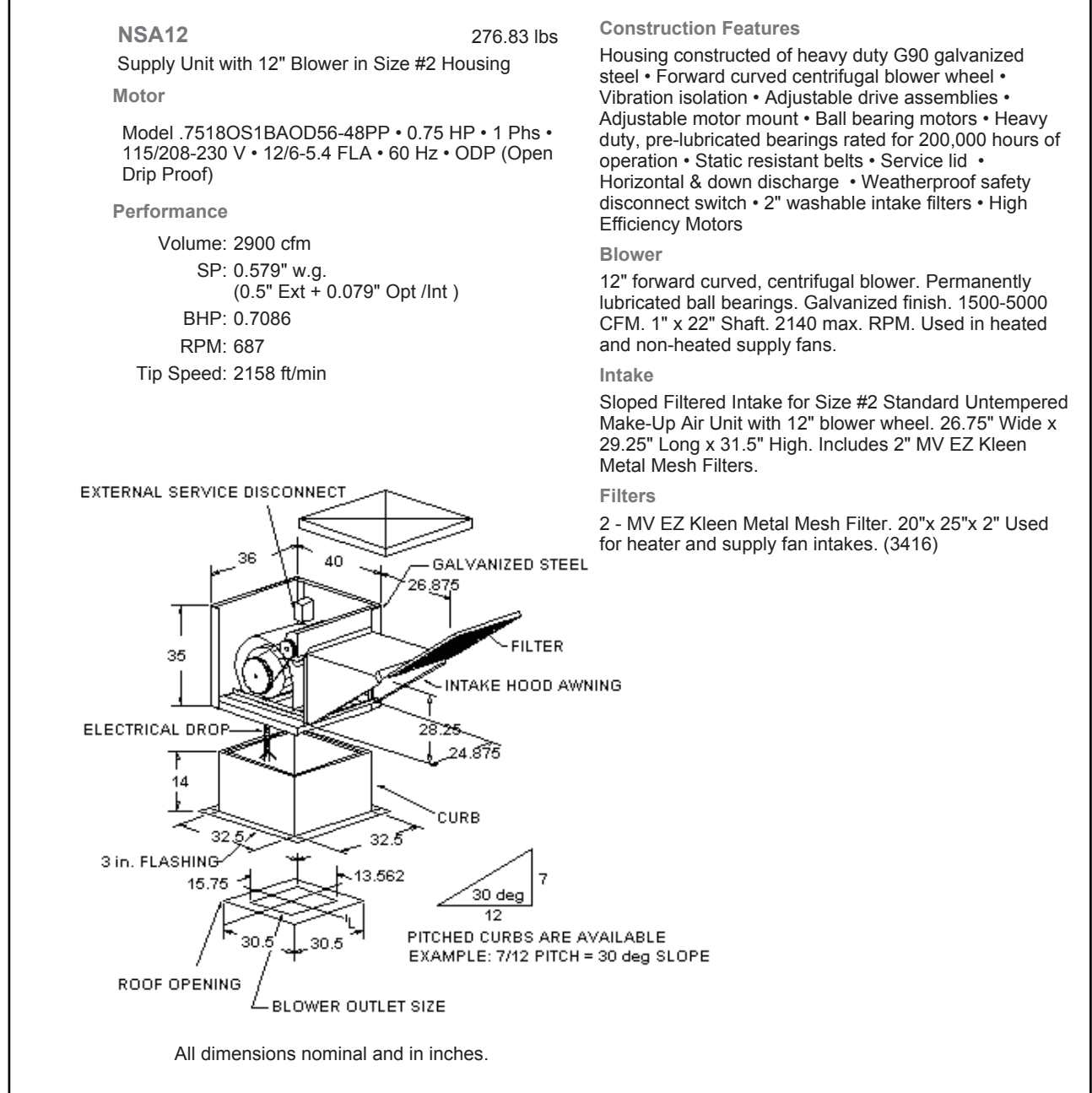
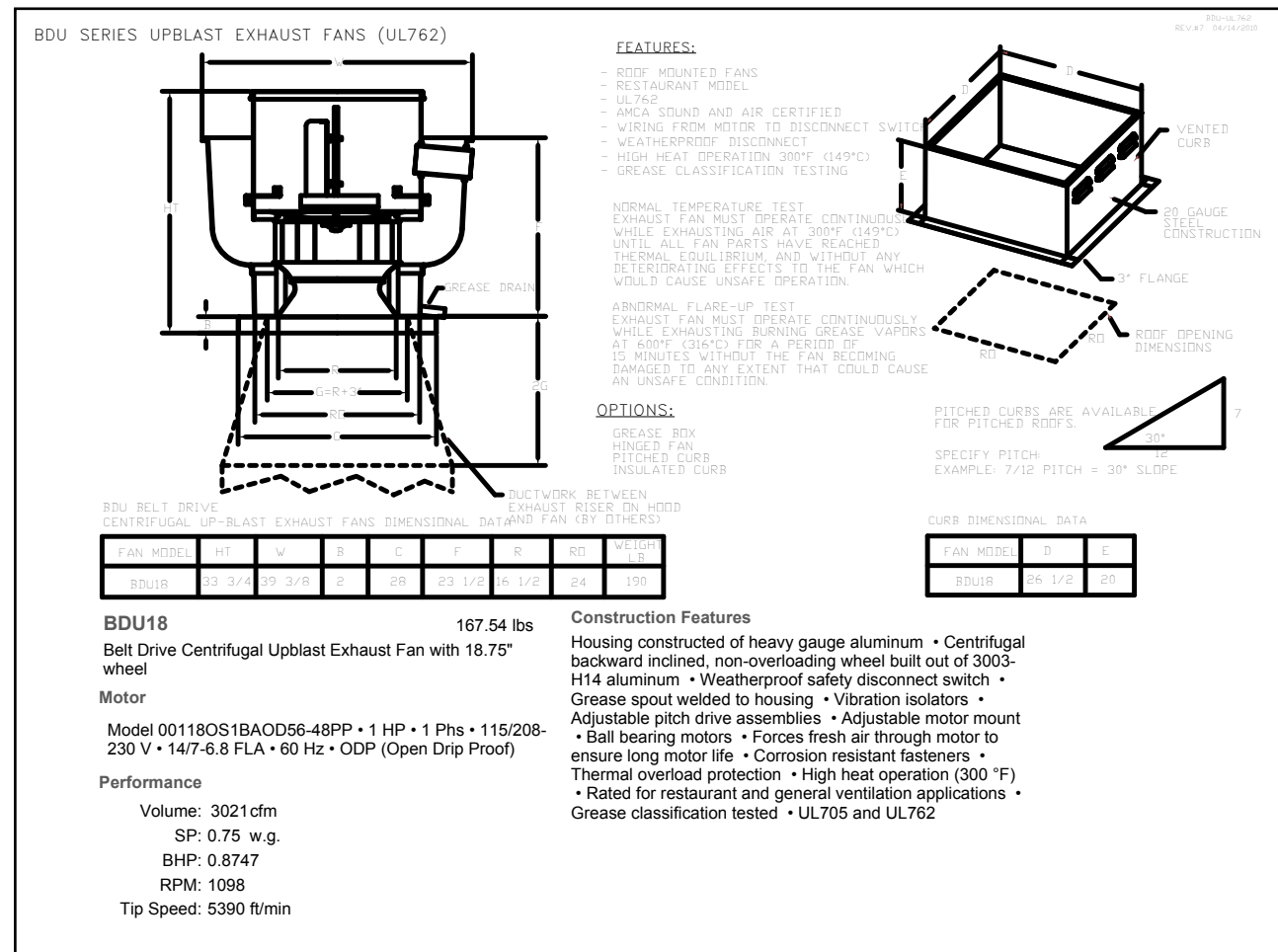
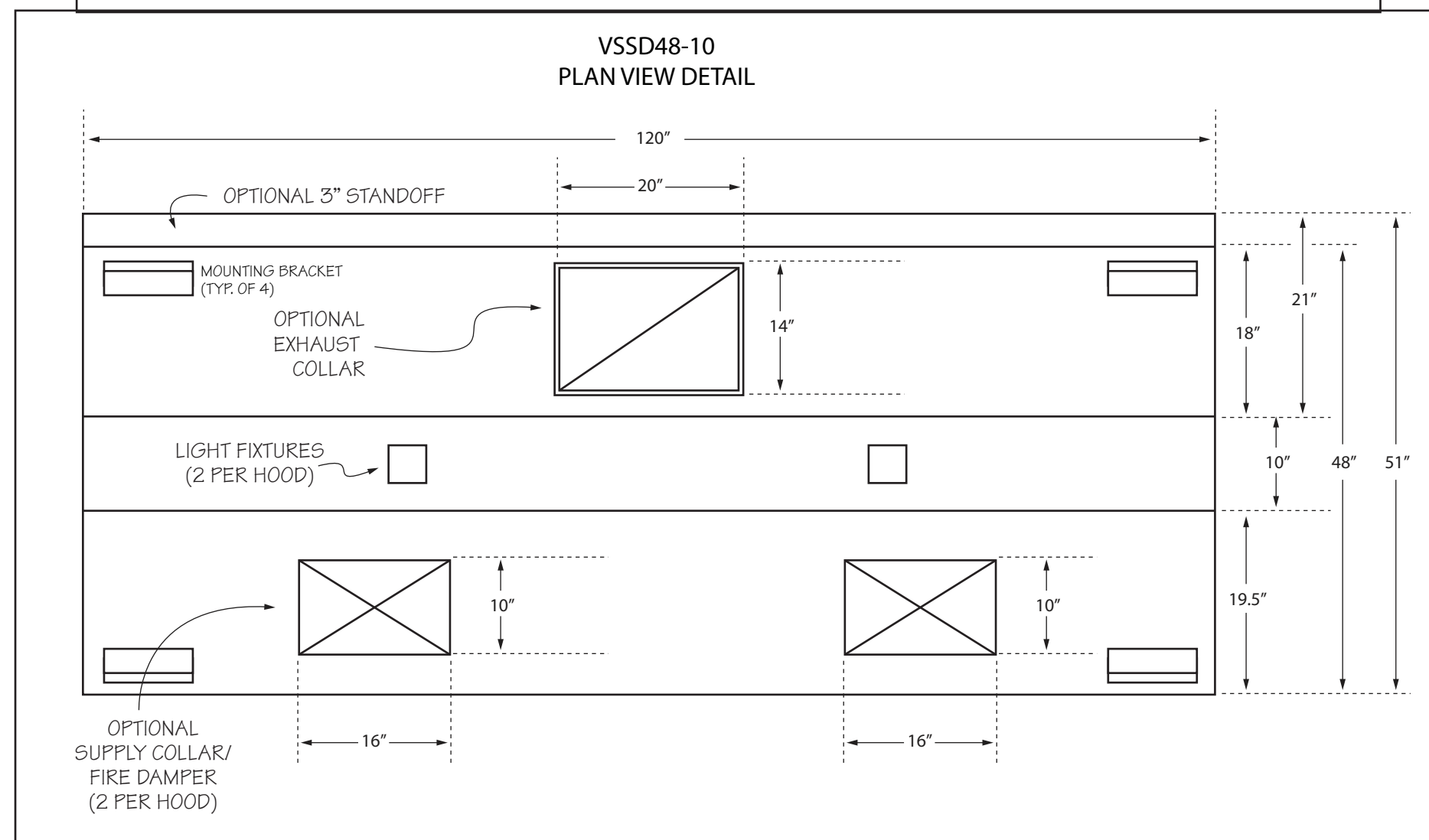
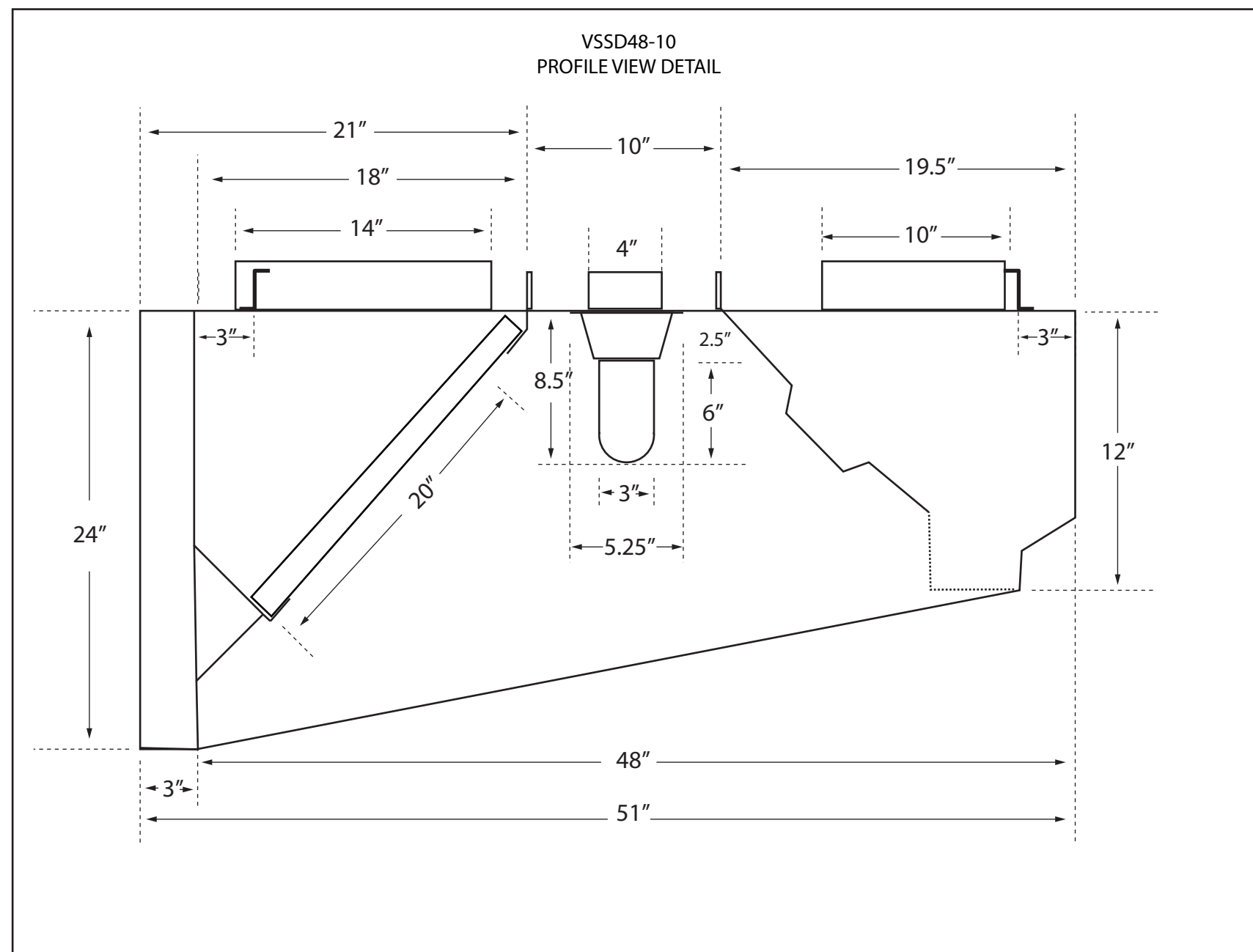
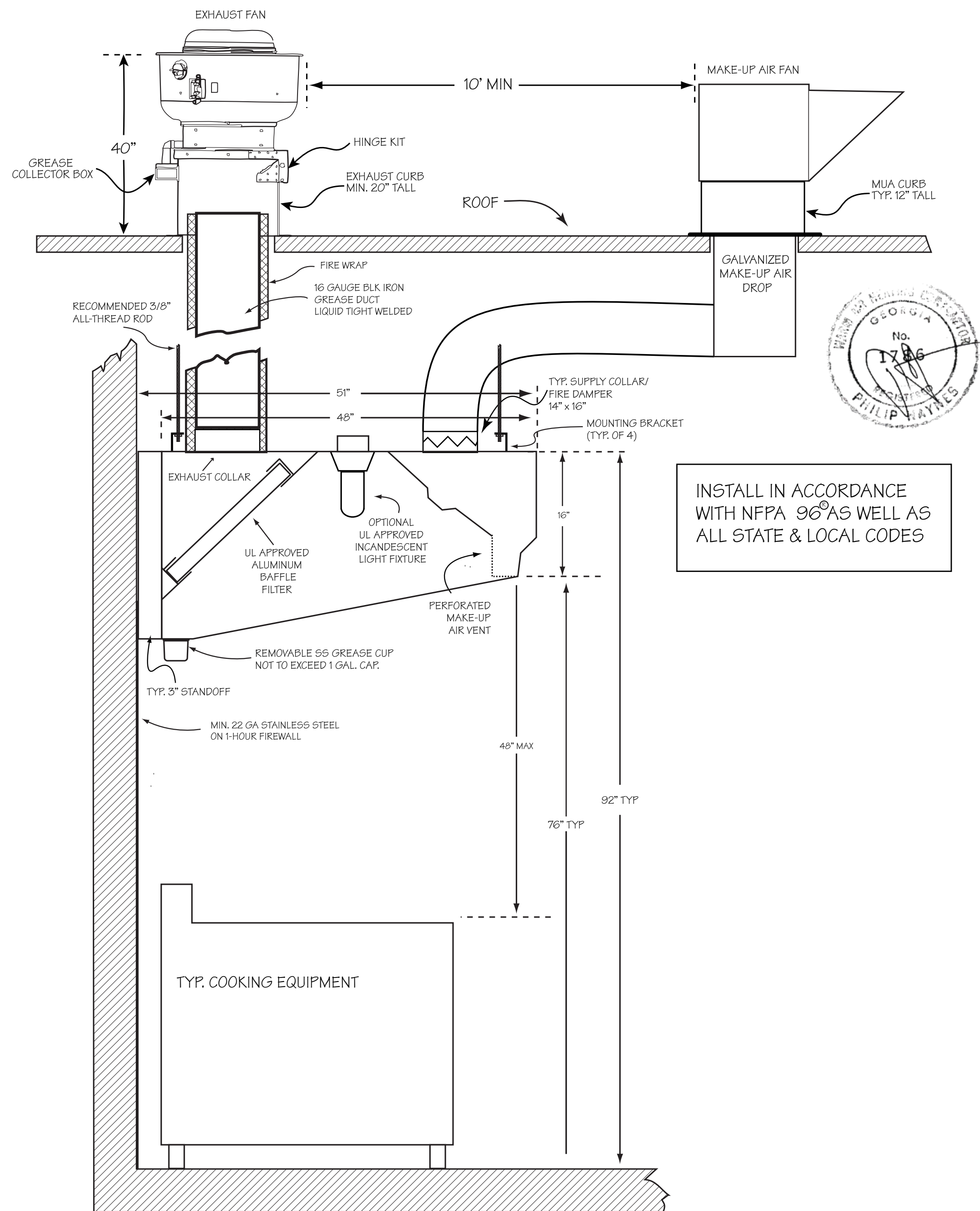
CFM REQUIREMENTS (PER HOOD)		COLLARS (PER HOOD)				ACCESSORIES	
EXHAUST	SUPPLY	EXHAUST		SUPPLY		STANDOFF	OTHER:
3,021 @ .5 S.F.	2,417 @ .12 S.F.	QTY	SIZE	QTY	SIZE	<input type="checkbox"/> NONE	
		1	14" X 20"	2	16" X 10"	<input type="checkbox"/> 3" <input type="checkbox"/> _____	

**VSSD48-10**

STAINLESS STEEL TYPE 1 EXHAUST HOOD  
WITH MAKEUP AIR VENT  
NSF LISTED. CONFORMS TO NFPA 96 REGULATIONS



### PROFILE VIEW - TYPICAL HOOD SYSTEM INSTALLATION



# SUPERIOR HOODS

2018 STEEL DRIVE TUCKER GA 30084  
TEL (770) 936-0770 FAX (770) 936-9914

TEL (770) 936-0770 FAX (770) 936-9914

**JOB:**

LOCATION:

DATE:

10

SCAIF: N/A

0511

V. A. I. I.

14/11/19

10

#